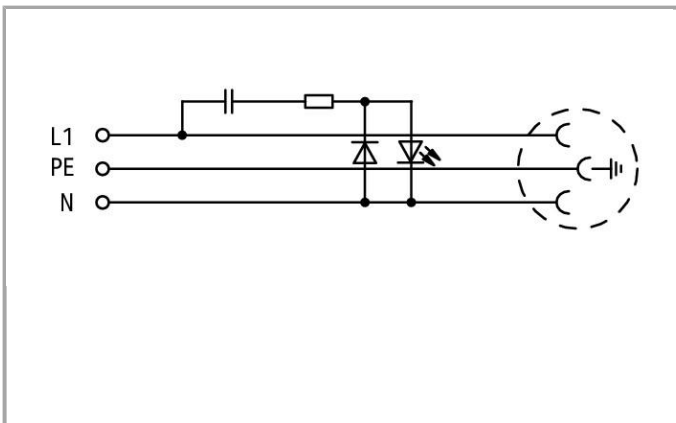
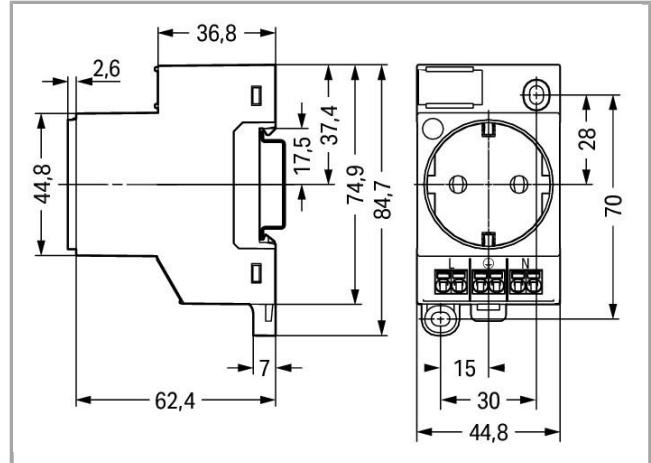


Data sheet | Item number: 709-582

Switchgear cabinet outlet; for DIN-rail and screw mounting; for plug, type F, CEE 7/4 (Schuko); common in DE, NL, AT; with LED status indicator; with Push-in Cage Clamp double connection; signal yellow



709-582



Item description

Safety information 1:

Installation erfordert Elektrofachkraft

Safety information 2:

During the insulation resistance test, the active conductors must be connected.

The integrated status indicator in the control cabinet outlet must be protected against transient overvoltages.

Overvoltage protection in low-voltage systems must be observed.

Data**Electrical data**

Voltage type (1)	AC
------------------	----

Ratings per IEC/EN 60664-1

Rated voltage (III / 3)	250 V
Rated impulse voltage (III / 3)	2 kV
Rated current	16 A

Connection data

Connection type (1)	L, PE, N
Connection technology	Push-in CAGE CLAMP®
Actuation type	Push-in
Actuation direction (1)	Operation parallel to conductor entry
Connectable conductor materials	Copper
Nominal cross section	2.5 mm ²
Solid conductor	0.2 2.5 mm ² / 24 14 AWG
Stranded conductor	0.2 2.5 mm ² / 24 14 AWG
Fine-stranded conductor	0.2 2.5 mm ² / 24 14 AWG
Strip length	9 10 mm / 0.35 0.39 inch
Number of connection types	3
Number of test slots	2
No. of poles	3

Geometrical Data

Width	45 mm / 1.772 inch
Height	65 mm / 2.559 inch
Height from the surface	65 mm / 2.559 inch
Height from upper-edge of DIN-35 rail	59.8 mm / 2.354 inch
Depth	84.7 mm / 3.335 inch

Mechanical data

Type of mounting	DIN-35 rail
------------------	-------------

Protection class	IP20
Potential marking	L N

Material Data

Color	signal yellow
Material group	I
Insulating material	Polyamide 66 (PA 66)
Flammability class per UL94	V0
Clamping spring material	Chrome nickel spring steel (CrNi)
Contact material	Copper alloy
Contact plating	Sn
Weight	81.6 g

Environmental Requirements


Continuous operating temperature	-35 +85 °C
----------------------------------	------------

Commercial data

Country of origin	BG
GTIN	4055143718325
Customs Tariff No.	85366990990

Approvals / Certificates

Country specific Approvals

Logo	Approval	Additional Approval Text	Certificate name
	VDE VDE Prüf- und Zertifizierungsinstitut	-	40047680 (IEC 60884-1)

Downloads

Documentation

Bid Text

709-582	docx 16.5 kB	Download
---------	-----------------	----------

CAD/CAE - Smart Data

CAD data

3D Download 709-582



3D Download 709-582

URL

Download

EPLAN

EPLAN Data Portal

Download

Subject to changes.
